

WWS7020-B WorkSight® System

QUICK INSTALLATION GUIDE



Powered by
PRECO
ELECTRONICS

1 Before You Start

Contents:
 WWS7220 Sensor (1)
 Sensor Mounting Hardware (1)
 WSZ-BK90 Sensor Bracket (1)
 A/BK Hardware (1)
 WD7102 Display (1)
 Display Mounting Assembly: (1) each Mounting Arm, Mounting Ball, Adhesive Base (Assembly required)
 Cables (1)
 WWS71PA Cable 6.5'/2.0M (1), WD71PA Cable 6'/1.8M (1)
 User Manual and Drill Template

2 Mount Sensor

Select a location for the sensor approximately 3ft/1M from the ground. Ideally the sensor should be centered on the rear of the vehicle.

Important!
 Before the PreView Sensor is permanently installed to the vehicle, verify the selected location provides a clear detection zone. Temporarily attach the sensor in the proposed location, apply power to the system, and verify nothing is detected.

Mounting
 The sensor may be mounted directly on the vehicle or attached using the supplied bracket. Using the drill template, scribe position marks through the holes and drill 1/4" (6mm) holes centered at the marks. A 1 1/2" diameter clearance hole is required for the sensor connector and the mating cable. Secure the sensor to the vehicle with the supplied bracket and hardware. Apply a maximum of 22 in-lbs to secure the sensor.

3 Mount Display

Mount the display in a location that is easily viewed by the driver during vehicle operation. Typical location for the display is on the dash within reach of the driver, but where it does not obstruct view of the road or gauges.

Not all hardware shown



WWS7220



WWS71PA



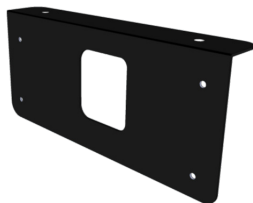
WD7102



WD71PA

Note orientation:
THIS SIDE UP

Sensor Hardware



WSZ-BK90

A/BK Bracket Hardware



Display Mounting Assembly



RAM-B-201U



RAM-B-237U



RAP-B-378U

Detailed Wiring Diagram



Back Page

The quick install guide is only a supplement to the product manuals. Please read all of the manuals for complete information and instructions before installing the product.



WWS7020-B WorkSight® System

QUICK INSTALLATION GUIDE

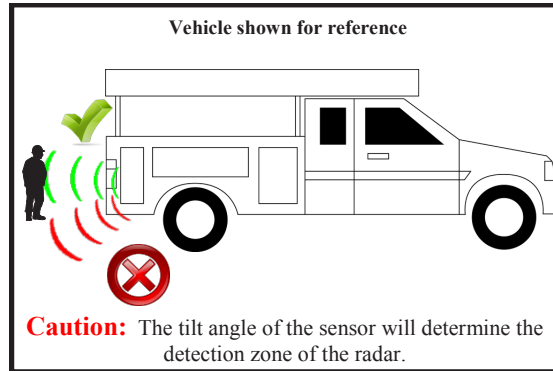


Powered by
PRECO
ELECTRONICS

Initial System Power Up and Test

Once the sensor and display are installed, wired and connected, power should be applied to test system operation. The vehicle must be placed in reverse to power up the sensor. **Follow the instructions in the user manual to join the sensor to the display.** If the display is indicating a detection and there is no object in the machine's vicinity, check for any objects on the machine which may be detected by the sensor. If possible, move the sensor so it does not detect the object(s). If it is not possible to relocate the sensor contact Preco Electronics, Inc™.

Once the system has been installed, the detection zone should be tested. The test should be performed with two people, one who remains in the cab (the operator), and one who walks through the sensor field to the rear of the vehicle (the assistant). The operator engages the parking brake, presses the vehicle brake, and places the vehicle in reverse. The assistant then walks through the detection zone while the operator notes where the display indicates a detection. An accurate detection zone can be mapped by moving about the rear of the vehicle and noting when the display indicates a detection.

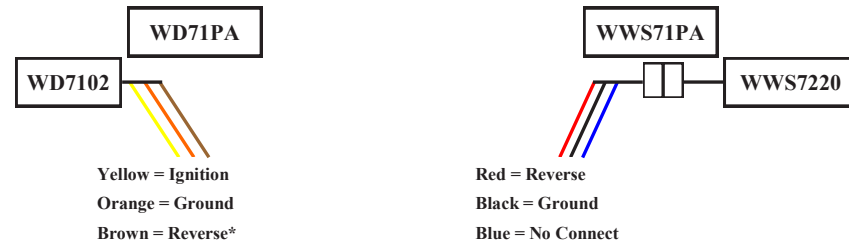
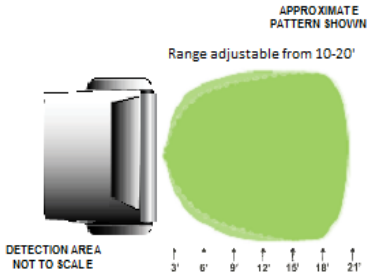
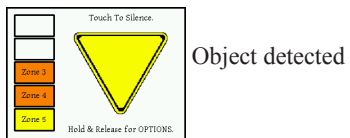


The PreView® system is a blind spot collision warning system designed to supplement other safety practices and/or devices. The machine operator is always the first line of defense when safely operating a vehicle.

TESTING / MAINTENANCE

Test the PreView® Radar System every day for functionality and performance prior to vehicle operation, refer to the sensor manual.

Allow a small service loop in the cables at the display and sensor and secure the cables with tie wraps.



*Reverse connection is recommended but optional, see WD7102 manual for more information.

