

Heavy Equipment Wheel Chocks



70 - 400 Ton Vehicles GVW (Gross Vehicle Operating Weight)

- Extremely tough urethane construction
- Range of wheel chocks rated for heavy vehicles with gross operating weights from 70 Ton (140,000 lbs) to 400 Ton (1.6 million lbs) and tyre sizes from 95" (241.30cm) to 165" (419.10cm)
- 3rd party tested for compliance
- ANSI compliant color written guidelines on proper chocking procedures
- Complies with NFPA 1901 and NFPA 1906 Standards
- Meets MSHA specifications (WC-UY910 only)
- High visibility colour used for safety
- Resistant to oils, fuels and solvents
- Strong carrying handle on the backside of the chock
- High visibility colour used for safety
- Available in orange (WC-UY700 only)
- Holes for rope, chains & mounting brackets

WC-UY700

Vehicles up to 70 Ton (140,000 lbs) GVW and tyre sizes up to 95" (241.30cm)



Also available in orange

WC-UY700

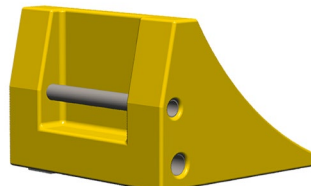
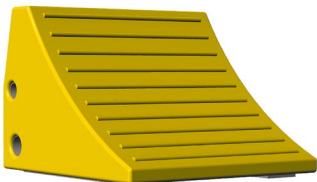
WC-UY700

Part No.	Length	Width	Height	Weight	Tyre Size	GVW
WC-UY700	17" (43.20cm)	14" (35.60cm)	14" (35.60cm)	27 lbs (12.25kg)	95" (241.30cm)	70 Ton* (140,000 lbs)

* Minimum of 2 chocks

WC-UY710

Vehicles up to 70 Ton (140,000 lbs) GVW and tyre sizes up to 65" (165.10cm)



WC-UY710

WC-UY710

Part No.	Length	Width	Height	Weight	Tyre Size	GVW
WC-UY710	15" (38.10cm)	15" (38.10cm)	11" (27.94cm)	19 lbs (8.62kg)	65" (165.10cm)	70 Ton (140,000 lbs)



Authorised Importer and Master Distributor



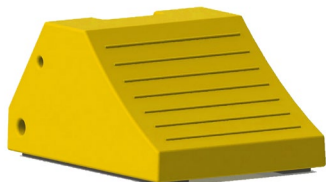
Heavy Equipment Wheel Chocks

70 - 400 Ton Vehicles GVW (Gross Vehicle Operating Weight)



WC-UY810

Vehicles up to 255 Ton (510,000 lbs) GVW and tyre sizes up to 142" (360.68cm)



WC-UY810



WC-UY810

Part No.	Length	Width	Height	Weight	Tyre Size	GVW
WC-UY810	21.9" (55.63cm)	14.9" (37.85cm)	10.6" (26.92cm)	24 lbs (10.89kg)	142" (360.68cm)	255 Ton* (510,000 lbs)

* Minimum of 2 chocks

Testing and qualification is required for individual vehicle for correct product selection to meet site requirements.

Advised GVW is a guide only. This will vary due to environmental factors. Please complete an adequate risk assessment before using chocks. Do not use chocks if chocks are damaged.

WC-UY910

Vehicles up to 400 Ton (1,600,000 lbs) GVW and tyre sizes up to 165" (419.10cm)



WC-UY910



WC-UY910

Part No.	Length	Width	Height	Weight	Tyre Size	GVW
WC-UY910	24.6" (62.50cm)	14.5" (36.90cm)	16" (40.70cm)	32 lbs (14.52kg)	165" (419.10cm)	400 Ton* (1,600,000 lbs)

* Minimum of 4 chocks



Authorised Importer and Master Distributor

