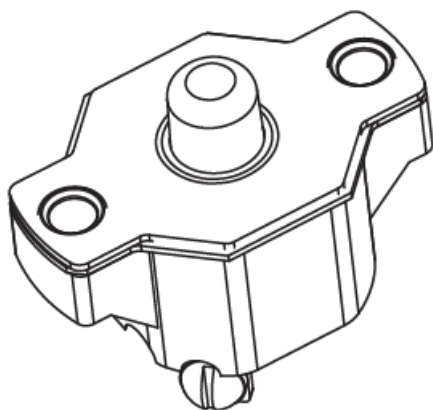


# Klixon C Series (CA, CM, CDA, CDM)

## CDM 2 to 40 Amp Commercial Thermal Circuit Breaker

**KLIXON**  
®


### Description

The KLIXON® C series thermal breakers are designed to protect wiring and meet the harshest environmental requirements. The C series closed construction circuit breakers are weatherproof sealed for protection against moisture, dust, grease, fuel vapors and other harsh environments. The C series breakers are compact, lightweight and designed to interrupt short circuits or overloads, and combine trip-free protection with fast response time. Typical applications are protection of wire cable of accessory circuits, equipment and battery protection in construction and off-road equipment, marine, recreational vehicles (RV's), mining, agricultural equipment and electric (hybrid) vehicles.

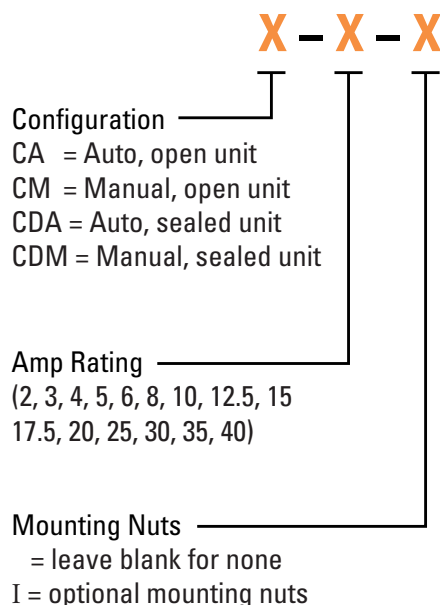
### Features and Benefits

- 30VDC or 120VAC, 2 to 40 Amps
- Open and closed construction
- Automatic and manual reset options
- Ignition protected SAE J1171
- Weatherproof SAE J553
- UL Recognized E36869

### Tech Specs

|  |   |
|--|---|
| Calibration: 200% rated current, 77°F (25°C) | 2 to 10 Amps: 20 to 150 seconds<br>12.5 to 50 amps: 5 to 55 seconds |
| Ultimate Trip at 77°F (25°C)                 | Must hold 100%, Must trip 135%                                      |
| Endurance                                    | Per SAE J553  |
| Interrupt Current Capacity                   | Per SAE J553 and ABYC E-11  |
| Mechanical Vibration                         | 10G MIL-STD-202 Method 204, Condition A                             |
| Salt Spray                                   | MIL-STD-202 Method 101D (sealed only)                               |
| Dielectric Strength                          | MIL-STD-202 Method 301, 1500VAC min                                 |
| Insulation Resistance                        | MIL-STD-202 Method 302, Condition B, 100 MΩ min                     |
| Weight                                       | CD: 48 grams max  |

### Ordering Information



| Part No.     | Description   |
|--------------|---|
| KLI-CDM10i   | Klixon SDLM Series 105 Amp Commercial Thermal Circuit Breaker |
| KLI-CDM12.5i | Klixon SDLM Series 120 Amp Commercial Thermal Circuit Breaker |
| KLI-CDM15i   | Klixon SDLM Series 150 Amp Commercial Thermal Circuit Breaker |
| KLI-CDM20i   | Klixon SDLM Series 35 Amp Commercial Thermal Circuit Breaker  |
| KLI-CDM25i   | Klixon SDLM Series 40 Amp Commercial Thermal Circuit Breaker  |
| KLI-CDM30i   | Klixon SDLM Series 50 Amp Commercial Thermal Circuit Breaker  |
| KLI-CDM40i   | Klixon SDLM Series 60 Amp Commercial Thermal Circuit Breaker  |

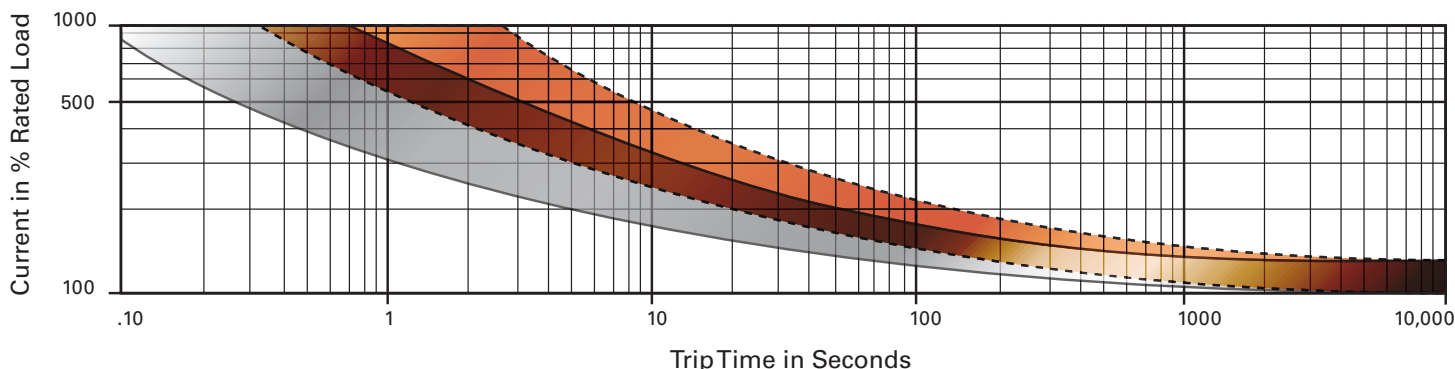
Authorised Importer and Master Distributor



# Klixon C Series (CA, CM, CDA, CDM)

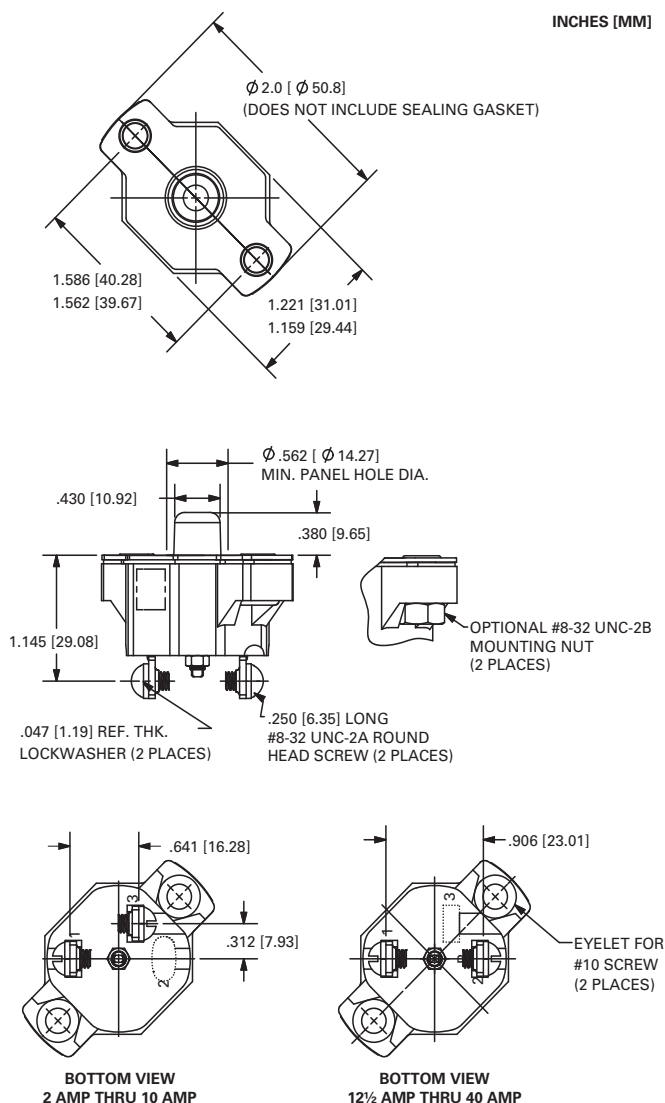


## Trip Curve - Approximate Time, Current Characteristics At 77°F (25°C)

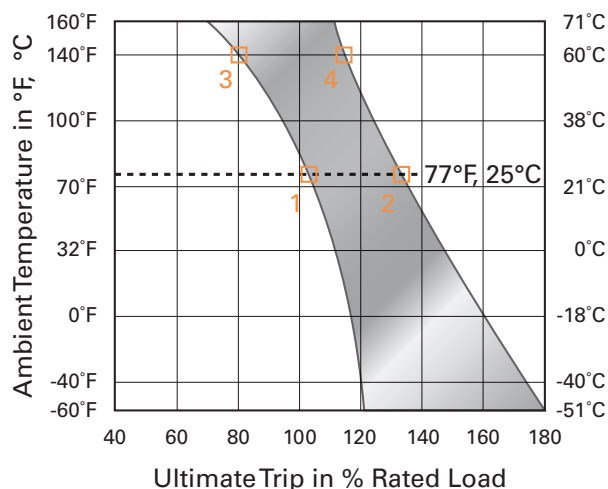


Dotted Lines: 10 amps or below  
Solid Lines: Above 10 amps

## Dimensions



## Derating Curve



Performance characteristics are based on room temperature (77°F, 25°C). Consult derating curve for ambient temperatures significantly higher or lower than standard room temperature.

*Example:* At 77°F (25°C) the device is calibrated to hold at 100% of rated current (1) and trip at 135% of rated current (2). At 140°F (60°C), the same device will hold at approximately 78% of rated current (3), and trip at approximately 115% of rated current (4).

Authorised Importer and Master Distributor

