

Vision X Allmand Light Tower Upgrade

VL-Pitmaster Kit



Description

The Allmand Light Tower Upgrade is a direct bolt-on factory replacement kit. Designed with powder coated mild steel brackets this kit offers robust mounts with an easily adjustable aiming system. The VL-Pitmaster LED fixture illuminates a wide area with advanced optics resulting in outstanding light output.

Features and Benefits

- Direct Bolt-On Factory Replacement
- Easy Angle Alignment
- 130,000+ Lumen Output
- 8 Tower Light Fixtures with Power Supply
- 2 Trunnion Brackets
- 2 Arm Mounts

Tech Specs

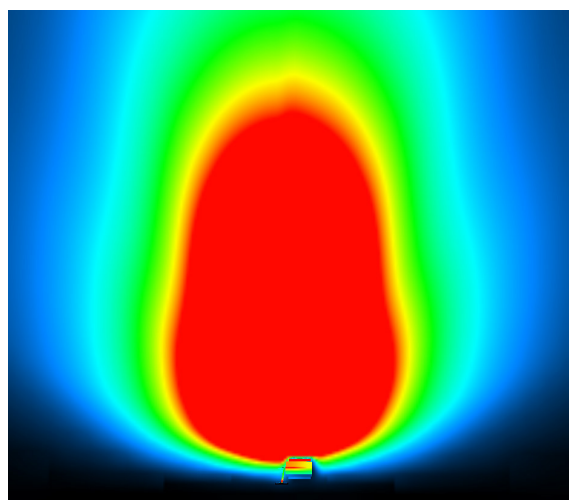
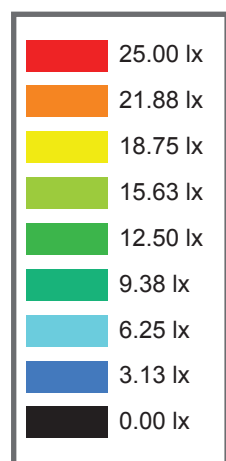
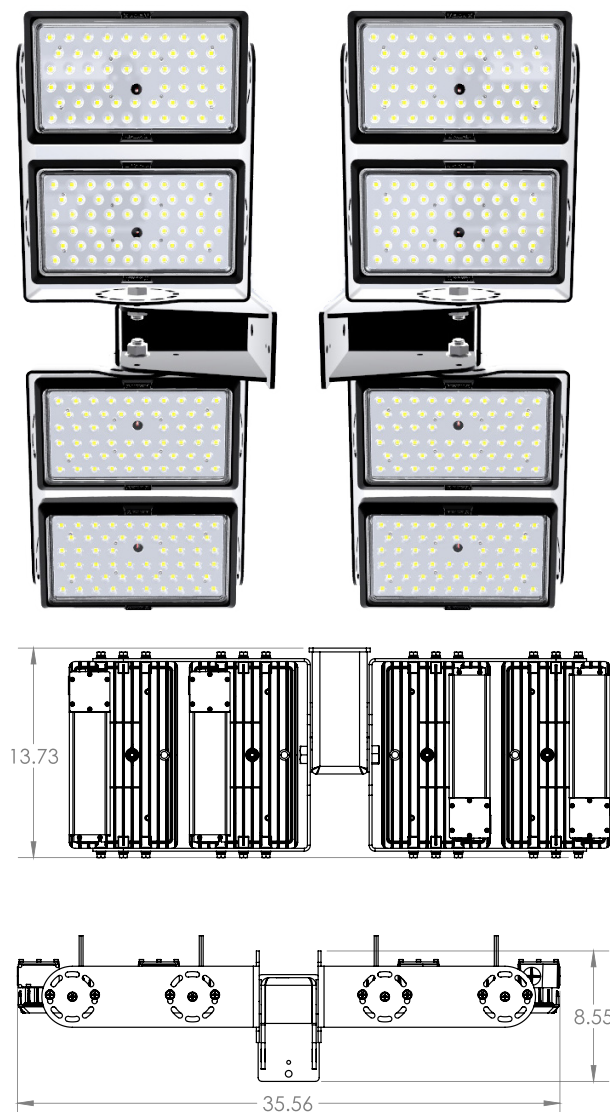
Fixture Weight	77.5lbs (34.25kg)
Mounting	Direct Bolt-On Arm Mount
Type of LEDs	1.8W LED
Lumens	134,280lm
Beam Pattern	60°
Wattage	800W
Amp Draw	7.27A @ 110V AC
Color Temperature	5000K
Operating Voltage	110-480V Available
Operating Temperature	-40°C ~ 85°C
Lifespan	50,000 hours
EMC	Varies Per Power Supply
Polarity	Reverse Polarity Protection
Connector	Deutsch DT04-2P
Mounting Bracket Material	Powder Coated Mild Steel
Lens	Polycarbonate
Finish	Marine Grade Gloss Black or Grey
Ingress Protection	IP68/IP69K
Vibration Rating	21.2Grms
Salt Spray	ISO 9227

Part No.

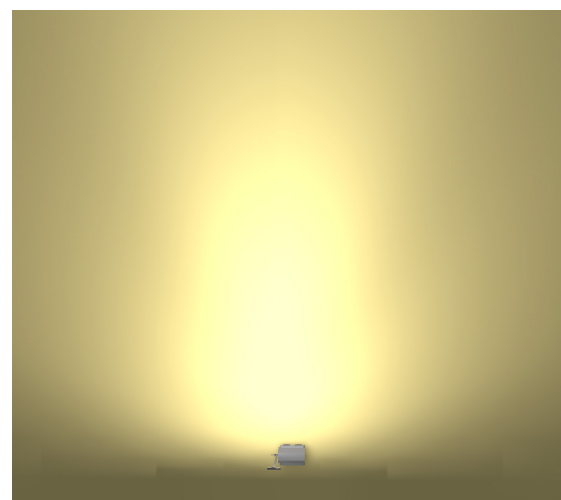
VSP025660PS	Allmand Light Tower Upgrade: Light Fixture
ABKOELPALMNLADBK	Allmand Light Tower Upgrade: Arm Mount
ABKACPMXDBLTNLADBK	Allmand Light Tower Upgrade: Trunnion Brackets

Description

VSP025660PS	Allmand Light Tower Upgrade: Light Fixture
ABKOELPALMNLADBK	Allmand Light Tower Upgrade: Arm Mount
ABKACPMXDBLTNLADBK	Allmand Light Tower Upgrade: Trunnion Brackets



Fixtures: 8
Beam Pattern: 60°
Height: 8 Meters



Authorised Importer and Master Distributor



Vision X Allmand Light Tower Upgrade

VL-Pitmaster Kit

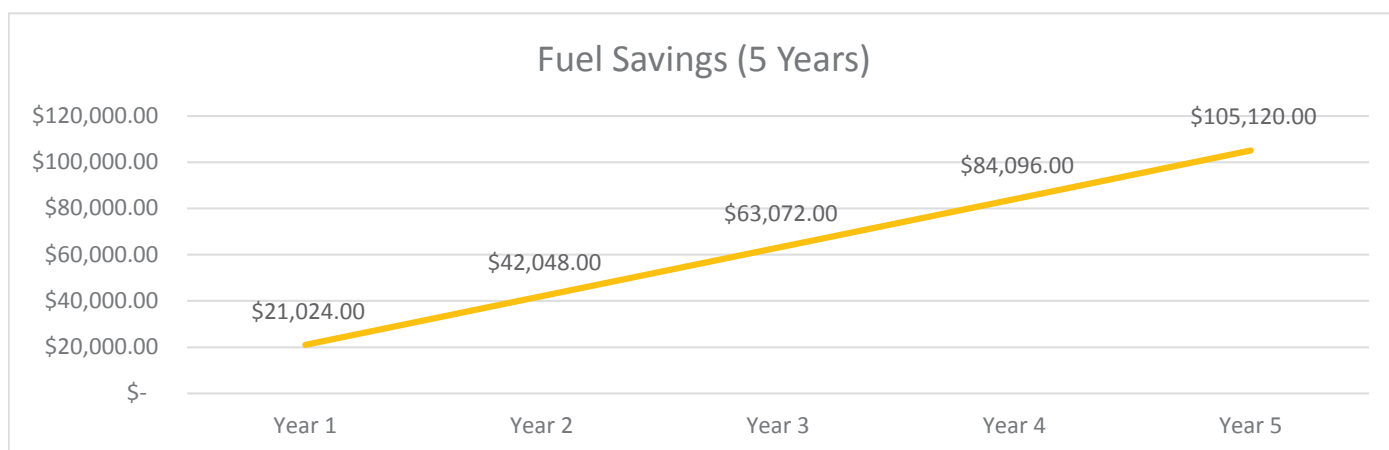
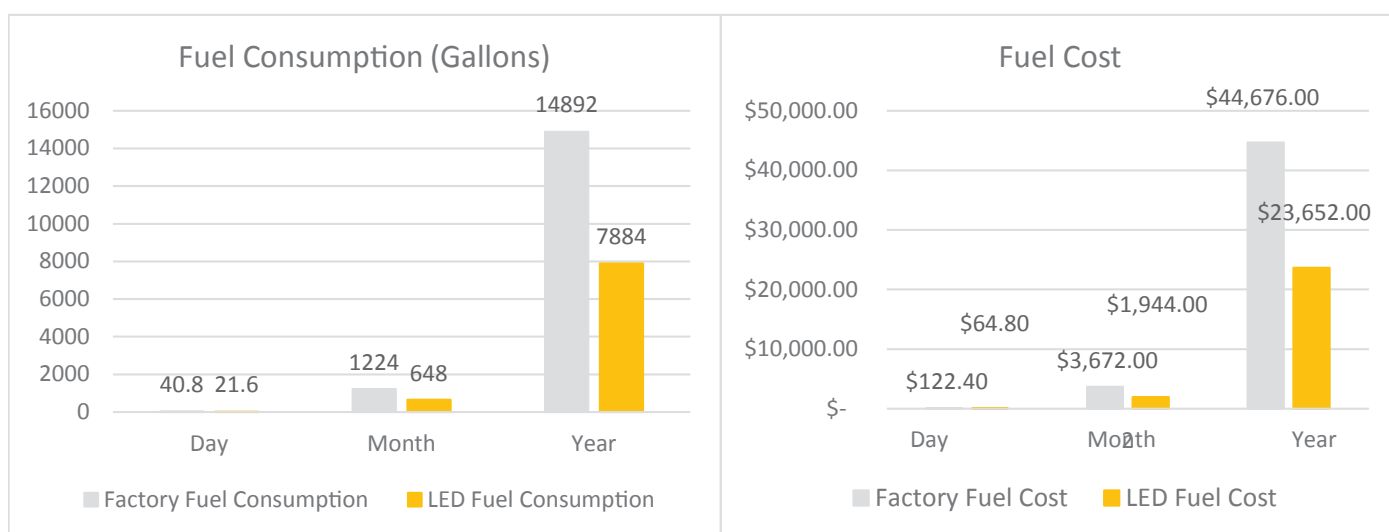
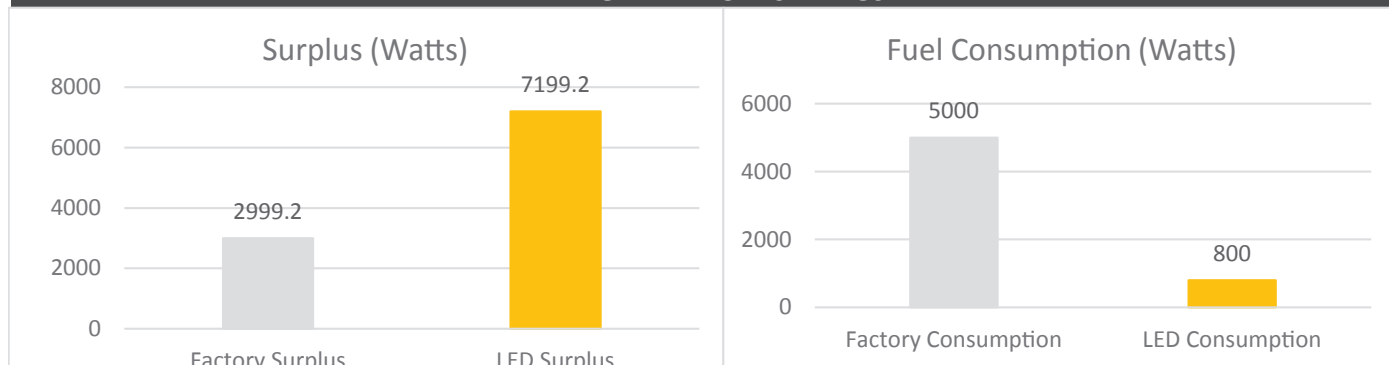
Wattage of Old Fixture: 625W
 Wattage of VX LED Fixture: 100W
 Number of Fixtures: 8
 Hours Per Day: 12

Light Plant Max Power: 66.66Amps
 Light Plant Voltage: 120V AC
 Full Load Fuel Consumption: 3.4 Gallons/Hr
 Half Load Fuel Consumption: 1.8 Gallons/Hr



Fuel Cost: \$3.00
 Factory Fixture Cost: \$0.00
 LED Fixture Cost: \$750

ENERGY AND FUEL SAVINGS



Total Upgrade Cost: \$ **6,000.00**
 5 Year Savings: \$ **99,120.00**

ROI: **0.29 Years**



Authorised Importer and Master Distributor

