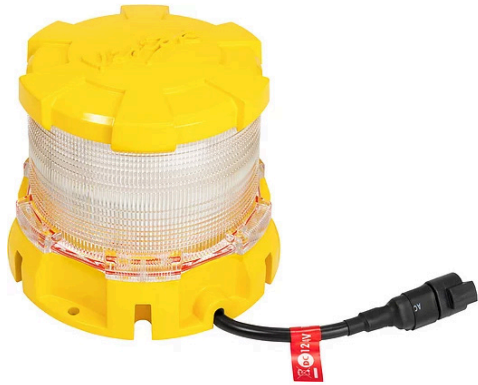


Vision X Heavy Duty LED Beacon Series



Intense and Highly Visible



Description

The 18 LED Beacons come standard in a 6hz split cycle strobe pattern, meaning there's three flashes and a pause per second. When coupled with the reflectors, the heavy duty strobes become intense and are highly visible. In areas where safety is key, LED Lighting is one of the safest options for alerting someone of a dangerous piece of moving equipment.

Features and Benefits

- Rugged Die-Cast Aluminum Housing
- 180 LEDs Create 360° Visibility
- Amber, Red, Blue, Green or White LEDs
- Two Modes: Simulated Rotation or Flashing Functions

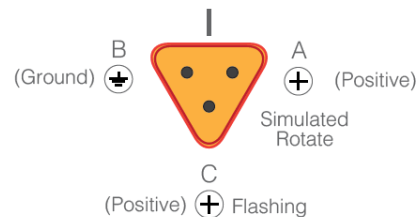
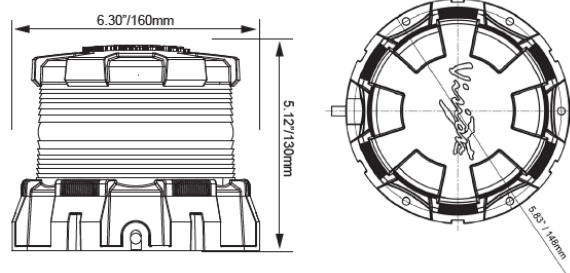
Applications

Industrial, Construction, Utility, Heavy Equipment, Agriculture, Port Facility Vehicles, Large Material Handling Vehicles

Tech Specs

Fixture Weight	2.96lbs (1.34kg)
Shipping Weight	4.88lbs (2.21kg)
Mounting	Single Bolt M10
LED	5050 (0.2W)/180 LED
Color	Red, Green, Blue or Amber
Lumens	2,520 lm
Wattage	36W
Amp Draw	3.0A @ 12V 1.5A @ 24V
Operating Voltage	12-32V DC
Operating Temperature	-40°C ~ 80°C
Lifespan	50,000 hrs
Connector	3 Pin Deutsch
Housing	Die-Cast 6061 Aluminum
Housing Color	Gloss Color
Lens	Polycarbonate
Surface Mounting	5 x 5.5mm diameter on 148mm Bolt Circle
Pole Mounting	3/4" NPT Female Input
EMC Emission	CISPR 25
Ingress Protection	IP68, IP69K
Vibration Rating	15.6 Grms
Warranty	3 Years

Part No.	Description
MIL-HDBR	Red Beacon
MIL-HDBG	Green Beacon
MIL-HDBB	Blue Beacon
MIL-HDBA	Amber Beacon



Authorised Importer and Master Distributor

