

# 4K

3840X2160

## World's first Ultra HD Cloud Dashcam

- Integrated Wi-Fi/GPS
- Cloud compatible



The top-tier DR900S captures  
4K Ultra High Definition video.  
4 times as many pixels as Full HD!

# Worldwide network of 50+ authorized distributors



2018

The world's first **4K UHD** resolution **Cloud-connected** dashcam is setting a new standard.

2015 ~

Since 2015, Pittasoft has set itself further apart with the launch of **BlackVue Over the Cloud**, a service enabling remote **Live View** of in-car footage from anywhere, anytime. Pittasoft has continued to innovate with the development of the **Fleet SDK**.

2011 ~ 2012

It was the **first to introduce Full HD** dashcams globally in 2011, followed by **Wi-Fi connectivity** in 2012 for easy setup and management of videos through a mobile phone. It has become well-known for its advanced **Parking Mode** monitoring functionality.

2007

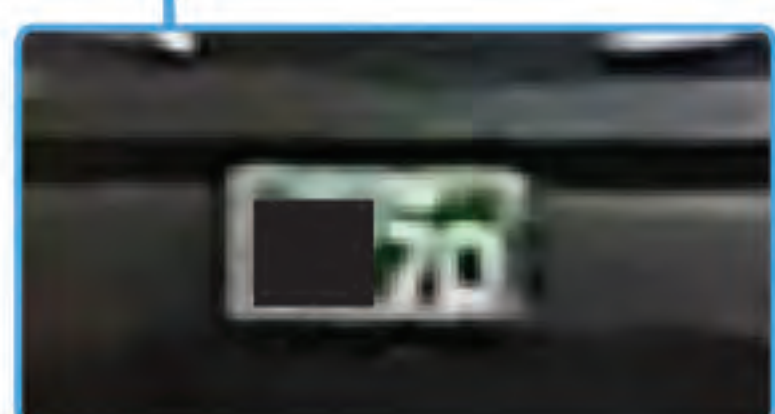
Established in **2007**, Pittasoft has become the standard for **simple, reliable, connected and elegant** dashcam design.

## We manufacture the world's most technically advanced dashcam products for private and commercial vehicles.

### Spotlight on the DR900S Series

#### World's first 4K UHD Cloud Dashcam

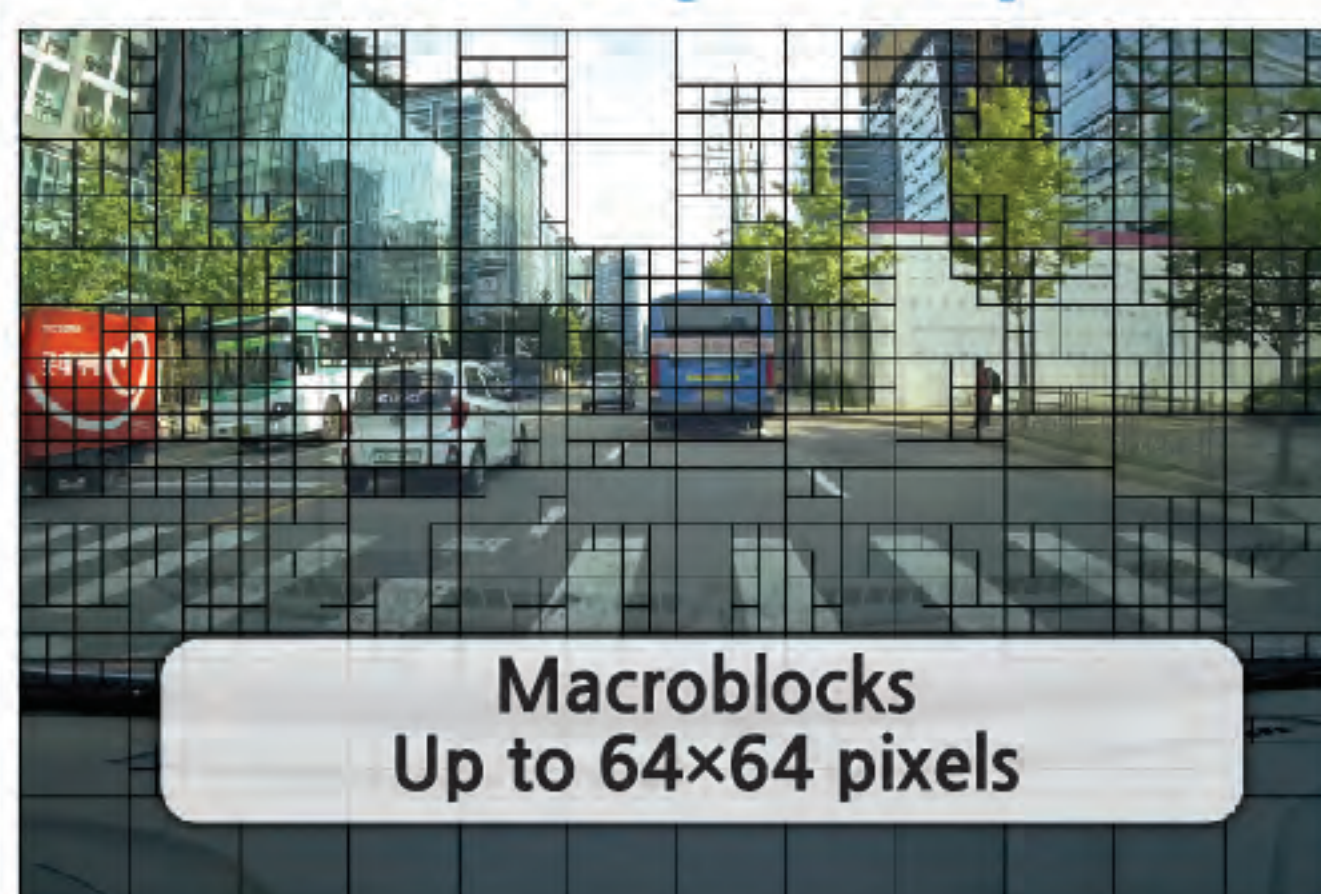
- **Outstanding image** quality without equal.
- **Crisp** license plate capture.
- DR900S-2CH's rear Full HD **Sony STARVIS™** image sensor ensures best image quality under any light.



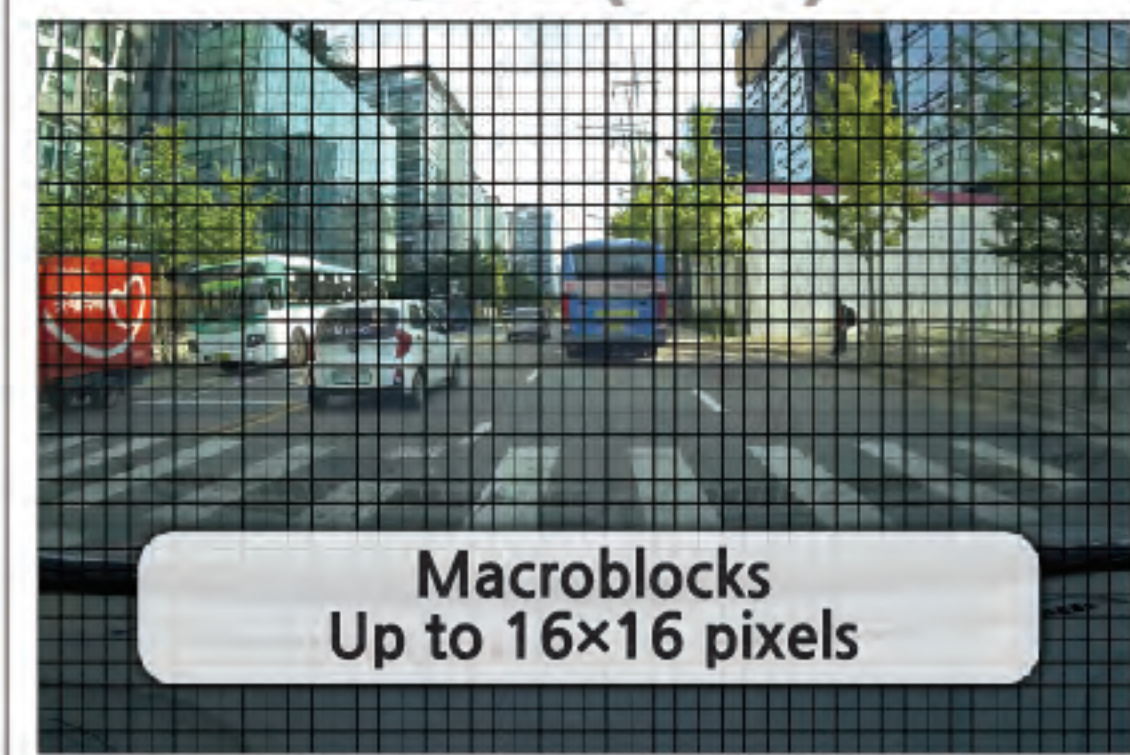
#### 4 times the resolution, Same recording time!

- You get 4 times bigger and better images **without sacrificing recording time**.

#### H.265(HEVC)

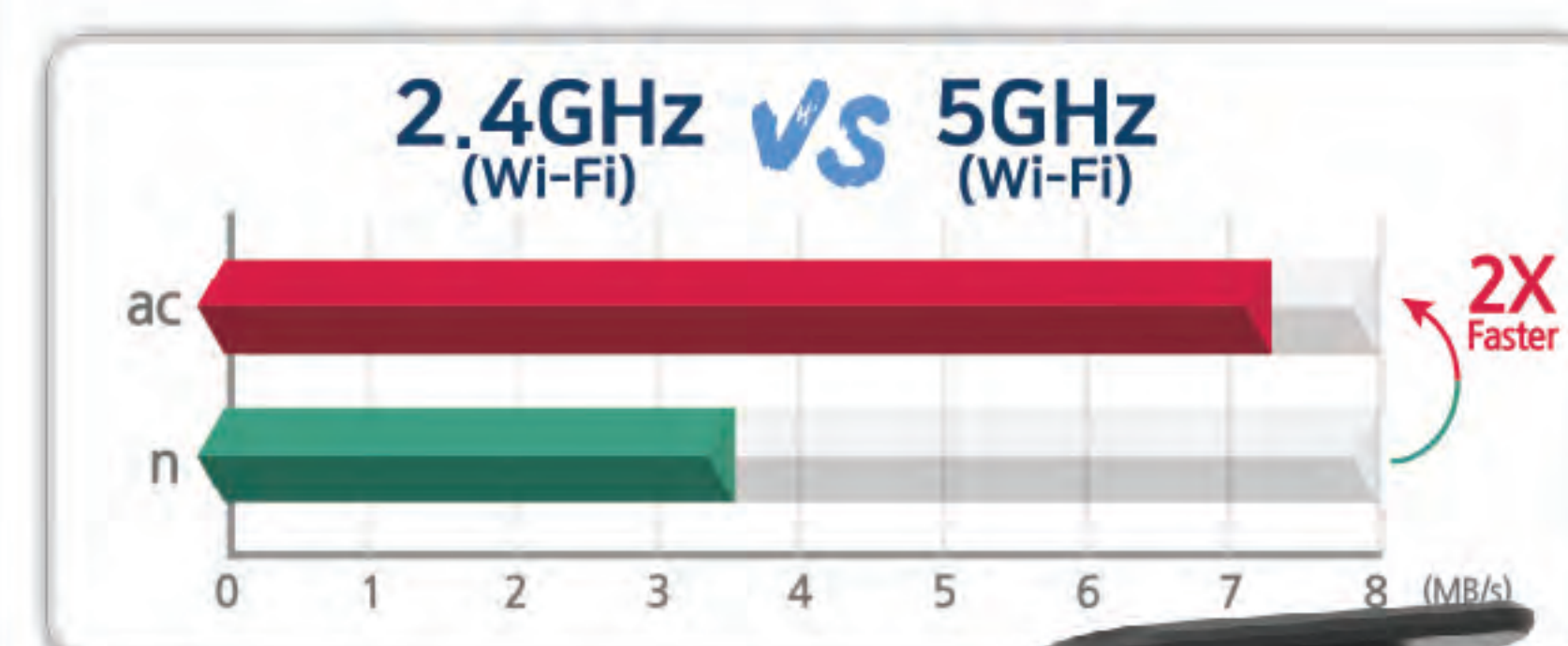


#### H.264(AVC)



#### Built-in GPS and Dual-band Wi-Fi

- The GPS adds **location** and **speed** data to your videos.
- The **dual-band 2.4-5GHz Wi-Fi** module can achieve much **faster** connection speed, which allows you to **transfer videos to your phone**.



# BlackVue Over the Cloud

Provides peace of mind to All vehicle owners

## Free add-on service for Cloud-compatible BlackVue

BlackVue Over the Cloud combines state-of-the-art dashcam technology with cloud ubiquity to make the most out of your BlackVue dashcam. Video backup, real-time GPS-tracking, alarm, the possibilities are endless. Being loved by more than 160K BlackVue Over the Cloud users world wide.



As long as you have a WiFi hotspot in your vehicle, you can have access to BlackVue's Over-the-Cloud service.

## BlackVue App (iOS, Android) and Viewer (Windows, Mac)

### Easily manage your video files and connect to the Cloud

- Both the BlackVue App and Viewer are free to download and use.
- They let you easily change your BlackVue configuration settings and browse through your videos in an intuitive way.
- With the BlackVue App, connect to your BlackVue in Wi-Fi to access files and check realtime Live View for easy setup and positioning of your dashcam.
- Both Viewer and App are compatible with BlackVue Over the Cloud.

Windows



Mac



iOS/Android App



# BlackVue Fleet Tracking

Simple BlackVue Dashcam-based vehicle tracking solution for business

## What is BlackVue Fleet Tracking?

Based on the BlackVue Over the Cloud infrastructure, BlackVue Fleet Tracking provides advanced tracking features for power users and businesses alike. Exclusive benefits include the ability to set up geo-fences and receive real-time alerts, access 90 days' worth of GPS tracking data, simultaneous live video monitoring of 4 dashcams, and Event File Auto-upload to the Cloud.



## Fleet Tracking benefits

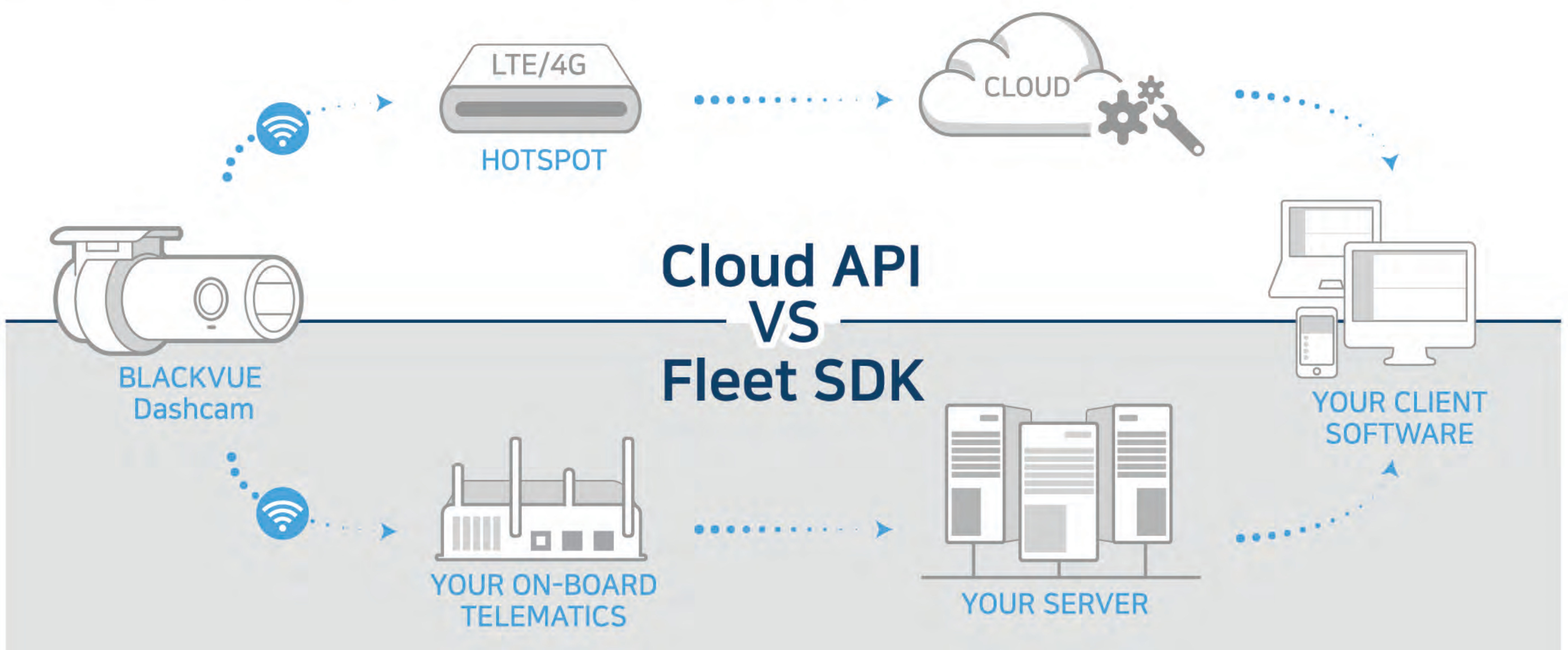
On top of the BlackVue Over the Cloud features, Fleet Tracking offers a number of business-tailored exclusives.

Includes:

- Multiple dashcam registrations
- Unlimited Live View
- Extended Storage
- BlackVue Viewer Pro for **Multi Live View**, **GPS Tracking History**, **Geo-fencing**, **Event Auto-Upload**



## BlackVue Cloud API and Fleet SDK

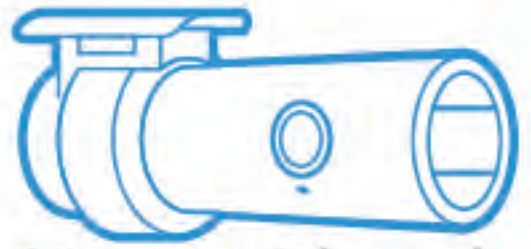


**Cloud API** : Enhance your existing software solution with live video and video files from the BlackVue dashcams using BlackVue's Cloud server powered by Amazon Web Services.

**Fleet SDK** : Tightly integrate BlackVue dashcams to your fleet management solution at the vehicle level via Wi-Fi.

# Discover the BlackVue Ecosystem

When you choose BlackVue, you buy into an ecosystem of dashcams, services and accessories that have been refined over years of development.



## Dashcams:

From Cloud-enabled dashcams to simple models, BlackVue dashcams are designed and manufactured with the highest standards of quality. BlackVue also offers dashcams tailored to the needs of professionals, with models incorporating interior recording, infrared night vision or water resistance.



## Accessories:

BlackVue accessories include Parking Mode add-ons and other accessories such as tamper-proof cases.



## Software:

BlackVue maintains a suite of mobile and desktop applications compatible with iOS, Android, Windows and Mac OS.



## Services:

BlackVue pioneered dashcam Cloud services with the launch of BlackVue Over the Cloud in 2015. The free service allows users to connect to their dashcam from anywhere, anytime, backup videos to the Cloud or receive Push Notifications when an impact is sensed by the BlackVue. BlackVue has developed the service further to provide fleet management features with BlackVue Fleet Tracking.

## DASHCAM LINE-UP HIGH-END CLOUD-COMPATIBLE MODELS

### DR900S SERIES

BlackVue Flagship / 4K UHD captures an unprecedented level of detail.



#### Redefining the Dashcam

- 4K UHD (3840x2160) @30fps
- H.265 encoding for small file size (H.264 supported)
- Adaptive Format-Free File System
- Event File Overwrite Protection
- Scheduled Reboot in Parking Mode
- 2.4/5Ghz Wi-Fi Module
- Wi-Fi, GPS, Cloud
- Built in impact and motion sensor

1280X720 HD

1920X1080 FHD

2560X1440 QHD

3840X2160 4K UHD



#### DR900S-1CH

4K UHD @30fps  
162° Wide View angle



#### DR900S-2CH

4K UHD (Front) / Full HD (Rear) @30fps  
Rear Sony STARVIS™ CMOS Sensor  
Front 162°, Rear 139° Wide View angle



# DR750S SERIES



BlackVue Bestseller / Full HD with Night Vision powered by Sony STARVIS™.

## The Cloud Dashcam Standard

- High Frame Rate on Main Camera (60FPS)
- Enhanced Night Vision
- Adaptive Format-Free File System
- Event File Overwrite Protection
- Scheduled Reboot in Parking Mode
- Wi-Fi, GPS, Cloud
- Built in impact and motion sensor

### 30FPS VS 60FPS



30FPS

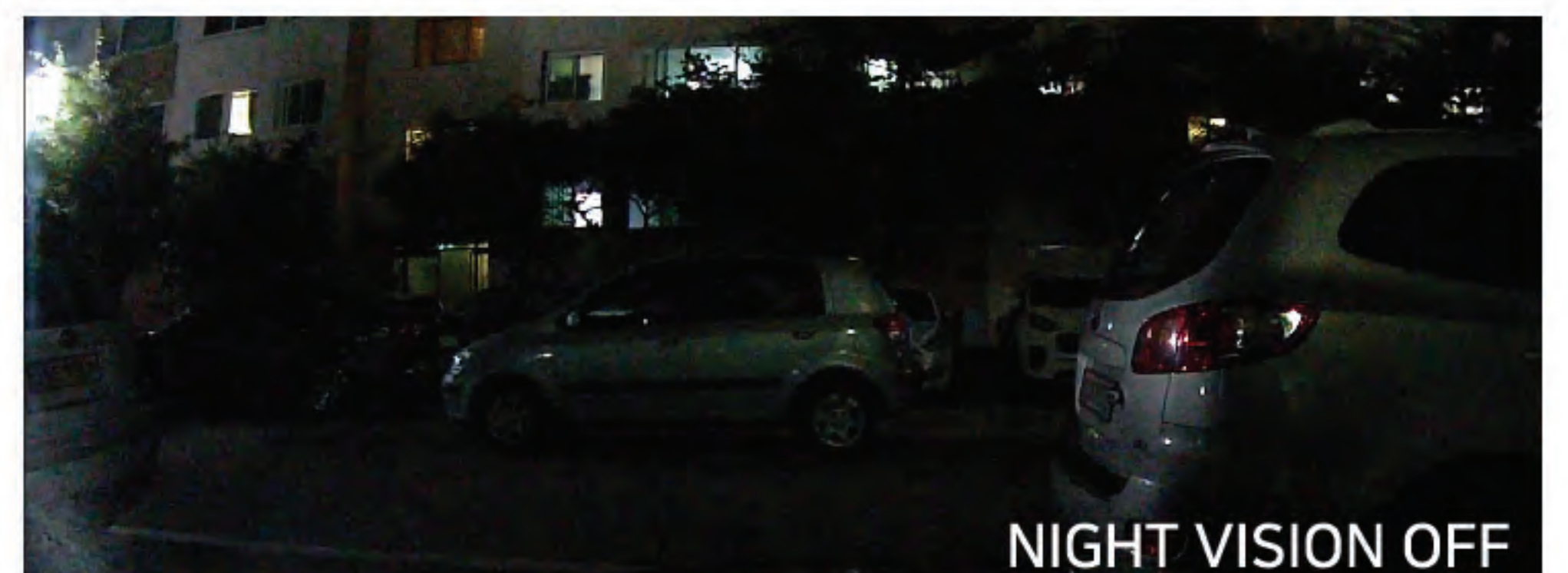


60FPS

### NIGHT VISION



NIGHT VISION ON



NIGHT VISION OFF



NORMAL

### DR750S-1CH

Full HD 1080p @60fps  
Sony STARVIS™ CMOS Sensor  
139° Wide View angle



### DR750S-2CH

Dual Full HD 1080p (Front @60fps/Rear @30fps)  
Dual Sony STARVIS™ CMOS Sensor  
139° Wide View angle



### DR750S-2CH TRUCK

Dual Full HD 1080p (Front@60fps / Rear@30fps)  
Front Sony STARVIS™ CMOS Sensor  
Waterproof Infrared (IR) Rear camera  
Up to 20m(65ft) waterproof video cable  
Ideal for large vehicles, trucks



### DR750S-2CH IR

Dual Full HD 1080p (Front@60fps/Rear@30fps)  
Front Sony STARVIS™ CMOS Sensor  
Interior Infrared (IR) Rear Camera  
With 145° Wide View angle  
Ideal for taxis, cabin monitoring



# DR590W SERIES

Wi-Fi Connectivity / Full HD with Night Vision powered by Sony STARVIS™.



Wi-Fi for easy setup and file transfer with the BlackVue App

## Simple Wi-Fi Dashcam

- DR590W-1CH: 1 channel / Full HD 1080p @60fps
- DR590W-2CH: 2 channels / Dual Full HD @30fps
- DR590W-2CH IR: 2 channels / Dual Full HD @30fps with interior infrared camera
- Adaptive Format-Free File Management System
- Sony STARVIS™ CMOS Sensor (Front camera)
- Scheduled Reboot in Parking Mode
- Optional GPS
- Built in impact sensor

### DR590W-1CH/2CH

Full HD 1080p  
139° Wide View angle  
Front Sony STARVIS™ CMOS Sensor



### DR590W-2CH IR

Dual Full HD 1080p (Front @30fps/Rear @30fps)  
139° Wide View angle  
Front Sony STARVIS™ CMOS Sensor  
Interior Infrared (IR) Rear Camera



# DR590 SERIES

The value option / Full HD with Night Vision powered by Sony STARVIS™.

## The Essential Dashcams

- DR590-1CH: 1 channel / Full HD 1080p @60fps
- DR590-2CH: 2 channels / Dual Full HD @30fps
- DR590-2CH IR: 2 channels / Dual Full HD @30fps with interior infrared camera
- Adaptive Format-Free File Management System
- Sony STARVIS™ CMOS Sensor (Front camera)
- Scheduled Reboot in Parking Mode
- Optional GPS
- Built in impact sensor

### DR590-1CH/2CH

Full HD 1080p  
139° Wide View angle  
Front Sony STARVIS™ CMOS Sensor



### DR590-2CH IR

Dual Full HD 1080p (Front @30fps/Rear @30fps)  
139° Wide View angle  
Front Sony STARVIS™ CMOS Sensor  
Interior Infrared (IR) Rear Camera



# DR490L-2CH

Quicker and easier operation / Full HD with Night Vision powered by Sony STARVIS™.

## Dual Full HD LCD Dashcam

- Dual Full HD LCD Dashcam Full HD 1080p (Front@30fps / Rear@30fps)
- Sony Starvis CMOS Sensor
- 3.5 inch touch screen LCD
- Native Parking Mode Support
- Format-Free File Management
- Built in impact sensor
- Lane Departure Warning System (LDWS)

### DR490L-2CH



# PARKING MODE ACCESSORIES



**Power Magic EZ**

**Plug and Play OBD Kit**

- The easiest way to enjoy Parking Mode
- Timer and Voltage cut-off functions
- Parking Mode switch



**Power Magic Pro**

**Best-selling hardwiring kit**

- Enable Parking Mode monitoring and protect your vehicle's battery
- Timer and Voltage cut-off functions
- Parking Mode switch



**Power Magic Battery Pack B-112**

**1 hour charge / 12 hours power**

- Enjoy Parking Mode recording without hardwiring your dashcam
- No installation required (Plug & Play)



**Power Magic Ultra Battery B-124**

**1 hour charge / 24 hours+ power**



- 6000mAh, Fast-Charging, Expandable
- Bluetooth and free battery manager app
- 40-minute charging time when hardwired
- Connect multiple 6600mAh Expansion Batteries

# TAMPER-PROOF CASE

BTC-1A and BTC-1B For DR900S/750S Series

BTC-2A For DR590W/590 Series

Prevents access to microSD card, power and coaxial cables

- BTC-1A: for sedan-type windshields
- BTC-1B: for vertical-type windshields (heavy trucks)
- BTC-2A: Suitable for all windshield types



**BTC-1A/B**

**INSTALLED**

For DR900S/750S Series



**BTC-2A**

**INSTALLED**

For DR590W/590 Series

